

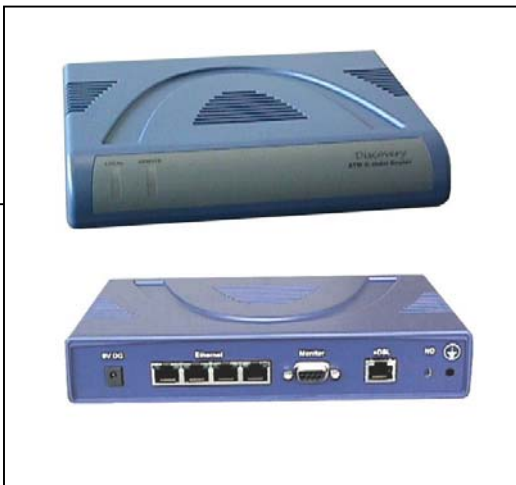
2 and 4 Wire SHDSL.bis

Up to 11.4Mbps

Ethernet Router

FlexDSL Discovery

ATM Based SHDSL.bis Ethernet Router/Bridge



Features

- 2 and 4 Wire SHDSL (TC-PAM16/32)
- Up to 5.7Mbps and 11.4Mbps respectively
- Fully featured ATM Router and Bridge
- Optional 4 Port Ethernet Switch
- Optional VLAN and Stateful Packet Inspection Firewall
- VPN Pass-Through Support
- Console Port, Telnet, Web, and SNMP Management
- Interoperable with most common third party DSLAMs e.g. Alcatel, Siemens, and more...

The FlexDSL ATM Discovery SHDSL product family is a range of SHDSL routers that comply with the ITU-T G.991.2 standard, and are based on ATM technology. The modems are optimized for use in small to medium sized business environments. The SHDSL interface provides business-class, multi-range bandwidth starting from 192kbps to 5.696Mbps for the 2-wire device and from 384kbps to 11.392Mbps for the 4-wire version both with symmetric payload rates. These SHDSL routers provide integrated high-end bridging and routing capabilities with advanced functions such as multi-DMZ, virtual server mapping, and VPN pass-through.

Due to the rapid growth of networks, virtual LANs have become one of the major new areas of the Internet Age. To meet the resulting demand these SHDSL routers support port-based VLAN and IEEE 802.1q VLAN over ATM networks. With always on Internet connections, the firewall featured FlexDSL ATM Discovery routers will provide advanced security through Stateful Packet Inspection (SPI) and DoS protection, in order to protect your assets from outside intruders and support access through secure connections. In addition, the FlexDSL ATM Discovery firewall routers also support IP precedence, allowing specific IP traffic to be prioritized and therefore to be served before conventional traffic.

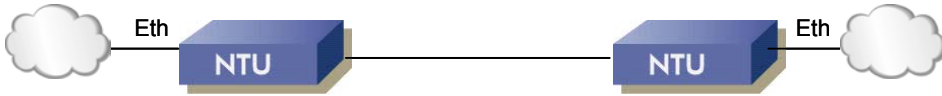
The FlexDSL ATM Discovery SHDSL routers are available with an optional 4-port Ethernet switch with 10/100Base-T, auto-sensing, auto-negotiation, and auto-MDIX LAN interfaces to meet all current telecommunication needs.

The FlexDSL ATM Discovery SHDSL routers allow customers to leverage latest broadband technologies to meet growing telecommunication needs. The power of FlexDSL ATM Discovery products will provide you with access to superior performance, manageability, and reliability.

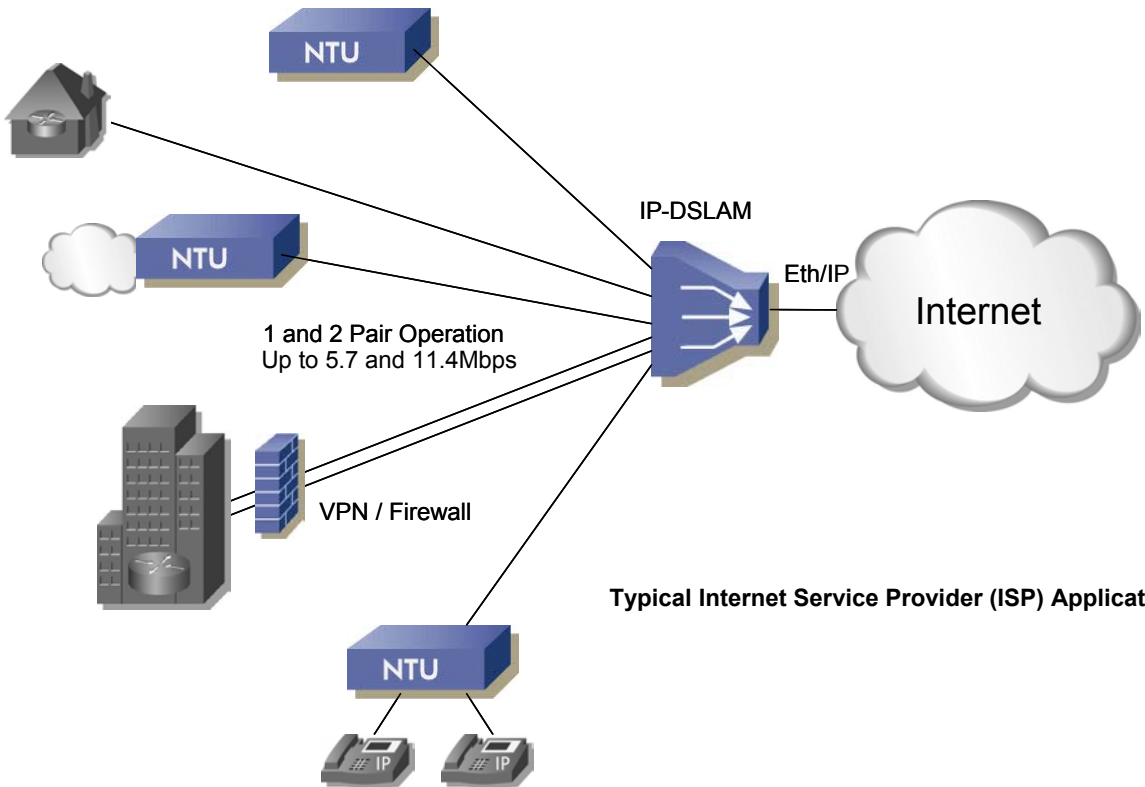
Specifications are subject to change without notice

2 and 4 Wire SHDSL
Up to 4.6Mbps
Ethernet Router

FlexDSL ATM Discovery SHDSL Applications

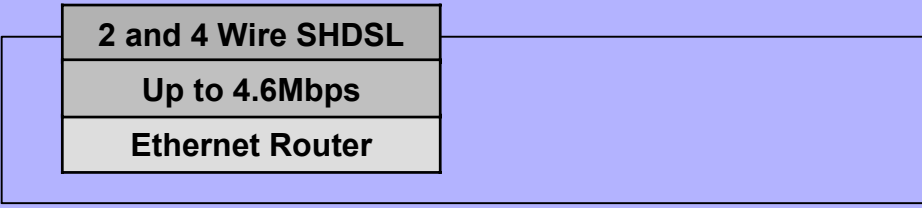


Simple Point-to-Point Campus Application



Typical Internet Service Provider (ISP) Application

Specifications are subject to change without notice



FlexDSL ATM Discovery SHDSL.bis Standalone Modem



Model: FG-PAM-SAN-4ETH-RV-2W,V8

DSL Version: SHDSL.bis (ATM)
 Modulation: TC-PAM16/32
 Data Rate: 192kbps - 5.7Mbps
 Copper Pairs: 1
 Modes: Master / Slave
 Interface: Ethernet Router/Bridge (10/100BaseT)
 Power: 9VDC
 Physical Interfaces: RJ45 (Ethernet), RJ48 (SHDSL), Power Jack 2.1/5.3mm (Power), DB9 (Management)
 Management: Console Port, Telnet, HTTP, and SNMP
 Power Supply: Included (220VAC/9VDC)
 Remarks: NAT, RIP, DNS, DHCP, VLAN, Firewall, etc.

Model: FG-PAM-SAN-4ETH-RV-4W,V8

DSL Version: SHDSL.bis (ATM)
 Modulation: TC-PAM16/32
 Data Rate: 192kbps - 11.4Mbps
 Copper Pairs: 2
 Modes: Master / Slave
 Interface: Ethernet Router/Bridge (10/100BaseT)
 Power: 9VDC
 Physical Interfaces: RJ45 (Ethernet), RJ48 (SHDSL), Power Jack 2.1/5.3mm (Power), DB9 (Management)
 Management: Console Port, Telnet, HTTP, and SNMP
 Power Supply: Included (220VAC/9VDC)
 Remarks: NAT, RIP, DNS, DHCP, VLAN, Firewall, etc.

FlexDSL ATM Discovery SHDSL.bis Overview

Functionality	Standalone	Subrack Module	ATM	Bridge	Router	2 Wire SHDSL (up to 5.7Mbps)	2/4 Wire SHDSL (up to 11 Mbps)	Single Ethernet Port	Internal 4 Port Ethernet Switch	Firewall	VLAN Support	Console Port Management	HTTP Management	Telnet Management	Optional SNMP Management
FlexDSL Discovery															
FG-PAM-SAN-4ETH-RV-2W,V8															
FG-PAM-SAN-4ETH-RV-4W,V8															

Specifications are subject to change without notice